

October 2020

Irrigation Winterization Notice for
Thompson River Ranch Carriage House

Dear Homeowner,

Winter is just around the corner. The time is fast approaching for the winterization (turn off) of the irrigation (sprinkler) system at your home. The Metropolitan District will winterize all landscape areas outside of the fence lines. This includes the front areas of your home.

As a homeowner you are responsible for the winterization of the irrigation system within your backyard. The irrigation backflow outside your unit is your responsibility to winterize.

As a courtesy to you, the information below will help you drain your backflow. This does not complete the winterization of your irrigation system. Evacuation of water in the manifold, mainline and valves and laterals will still be required, usually done with compressed air.

Russ Hofer rhofer@msiho.com

Octubre de 2020

Aviso de acondicionamiento para el invierno del riego para
Thompson River Ranch Carriage House

Querido Propietario de Casa:

El Invierno está a la vuelta de la esquina. Se acerca rápido el tiempo para la preparación para el invierno. Apagando la sistema de riego (aspersión) en su hogar. La Asociación de Propietarios acondicionará todas las áreas de paisaje fuera de las cercas. Esto incluye las áreas frontales de su hogar.

Como propietario de casa, usted es responsable de la preparación para el invierno del sistema de riego dentro de su patio trasero. El reflujo de riego fuera de su unidad es su responsabilidad de acondicionarlo para el invierno.

Como cortesía para usted, la siguiente información lo ayudará a drenar su reflujo. Esto no completa la preparación para el invierno de su sistema de riego. Seguirá siendo necesaria la evacuación de agua en el colector, la línea principal y las válvulas y los laterales, muchas veces con aire comprimido.

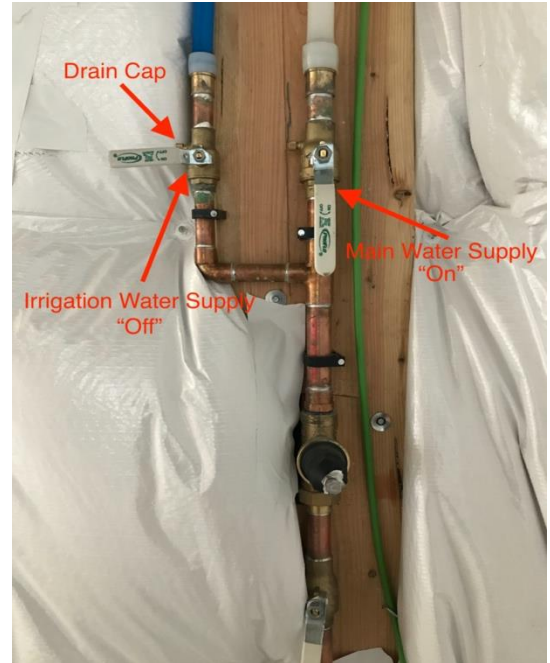
Russ Hofer rhofer@msiho.com

How to turn off your Irrigation Water and drain it

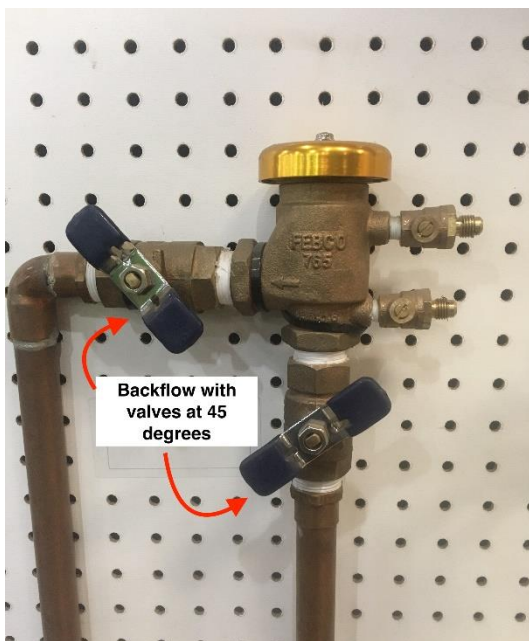
Step 1: Locate the main irrigation shut off valve inside your house (typically located inside a closet in the home)



Step 2: Turn off the irrigation main



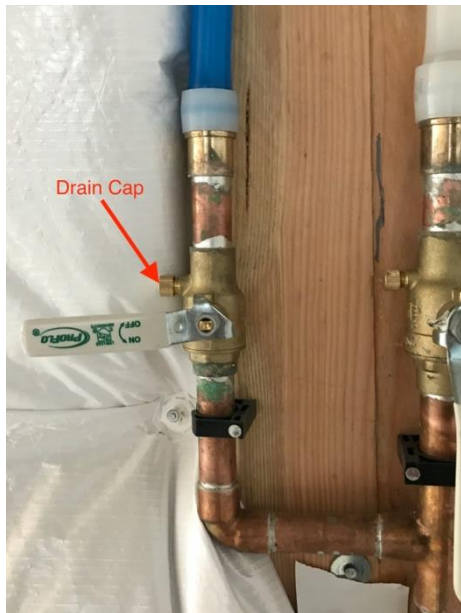
Step 3: Locate the backflow outside of the house. Turn both ball valves on the backflow to the "45" position.



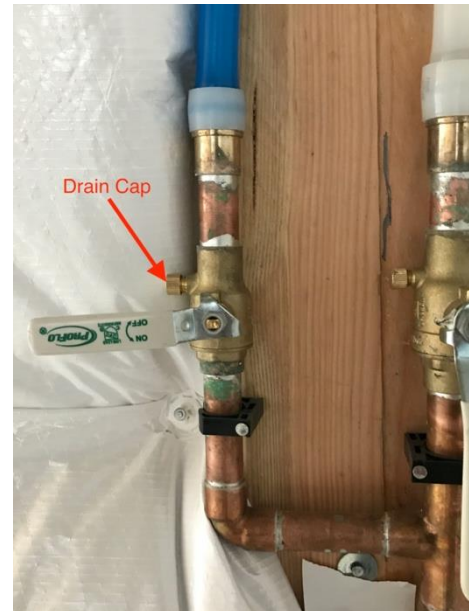
Step 4: Locate the drain cap and untwist till water starts to drip.



Step 5: Locate drain cap inside home and remove, draining the water. Use a cup or bucket to catch the water



Step 6: Once drained replace the drain cap. Finger tight only.



Step 7: After turning off the main irrigation valve, confirm that no water is leaking from the main irrigation valve inside the home or from the drain cap inside. Leave the backflow ball valves in the “45” position. A GVR Landscape Irrigation technician will winterize the backflow, manifold and valves outside the home.