

US HIGHWAY 34

LARIMER COUNTY ROAD 3

LARIMER COUNTY ROAD 18

INTERSTATE NO. 25

MONUMENT LEGEND
(PER LAND SURVEY PLAT 11/12/03
Rec. Dec. 8, 2003 Rec# 20030152684)

E - CENTER S 1/16 COR SEC 14
#6 REBAR W/ 2" ALUMINUM CAP
L.S. 20676

F - SE 1/16 COR SEC 14
POINT FALLS IN OLD CAR
WITNESS CORNER SOUTH 14.00',
#6 REBAR W/
3 1/4" ALUMINUM CAP
L.S. 16847

G - N 1/4 COR SEC 22
#6 REBAR
W/ 3 1/4 ALUMINUM CAP
L.S. 16847 IN MONUMENT BOX

H - E 1/16 COR SEC 15 & 22
#6 REBAR
W/ 3 1/4 ALUMINUM CAP
L.S. 16847

I - NW COR SEC 23
#6 REBAR W/
2 1/2" ALUMINUM CAP
L.S. 12374

J - S 1/4 COR SEC 14
2 3/4" PIPE W/
2" ALUMINUM CAP
L.S. 12374

K - E 1/16 COR SEC 14 & SEC 23
#6 REBAR W/
3 1/4" ALUMINUM CAP
L.S. 16847

L - SE COR SEC 14
#6 REBAR W/
2" ALUMINUM CAP
L.S. 11989

M - N 1/4 COR SEC 24
#6 REBAR W/
3 1/4" ALUMINUM CAP
L.S. 10855

O - N 1/16 COR SEC 22 & 23
#6 REBAR W/
2 1/2" ALUMINUM CAP
L.S. 12374

P - NW 1/16 COR SEC 23
#6 REBAR W/
2 1/2" ALUMINUM CAP
L.S. 32444

Q - CENTER N 1/16 COR SEC 23
#6 REBAR W/
2 1/2" ALUMINUM CAP
L.S. 12374

R - N 1/16 COR SEC 23 & 24
#6 REBAR W/
2" ALUMINUM CAP
L.S. 12374

S - NW 1/16 COR SEC 24
#6 REBAR W/
3 1/4" ALUMINUM CAP
L.S. 16847

T - CENTER N 1/16 COR SEC 24
#6 REBAR W/
2" ALUMINUM CAP
L.S. 12374

V - CENTER 1/4 COR SEC 22
#6 REBAR
W/ 3 1/4 ALUMINUM CAP
L.S. 16847 IN MONUMENT BOX

W - CENTER E 1/16 COR SEC 22
#6 REBAR W/
3 1/4 ALUMINUM CAP
L.S. 16847

X - W 1/4 COR SEC 23
#6 REBAR W/
2 1/2" ALUMINUM CAP
L.S. 12374

Y - CENTER W 1/16 COR SEC 23
#6 REBAR
W/ 3 1/4 ALUMINUM CAP
L.S. 16847

Z - CENTER 1/4 COR SEC 23
#6 REBAR
W/ 2 1/2" CAP L.S. 12374

AA - E 1/4 COR SEC 23
3 1/2" BRASS CAP
20' WITNESS CORNER

BB - CENTER W 1/16 COR SEC 24
2" ALUMINUM CAP
L.S. 12374

CC - CENTER 1/4 COR SEC 24
#6 REBAR W/
3 1/4" ALUMINUM CAP
L.S. 16847

FF - SE 1/16 SEC. 22,
3 1/4" ALUM. CAP
LS 34995

GG - S 1/16 SEC. 22/23
3 1/4" ALUM. CAP
LS 25645

HH - S 1/4 COR SEC 22
2" PIPE W/
2" ALUMINUM CAP
L.S. 12374
IN MONUMENT BOX

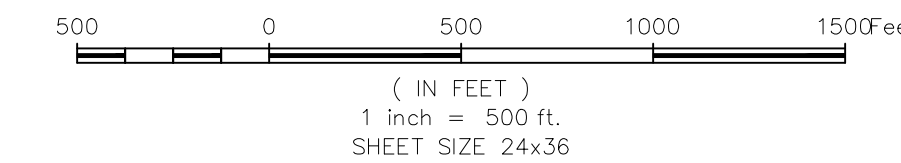
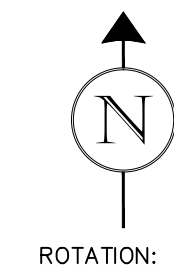
II - SW COR SEC 23
#6 REBAR W/
2" ALUMINUM CAP
L.S. ILLEGIBLE
IN MONUMENT BOX

KK - S 1/4 COR SEC 23
#6 REBAR W/
2 1/2" ALUMINUM CAP
L.S. 12374
IN MONUMENT BOX

LL - SE COR SEC 23
#6 REBAR W/
2 1/2" ALUMINUM CAP
L.S. 12374
IN MONUMENT BOX

MM - W 1/16 COR SEC 24 & 25
#6 REBAR W/
2" ALUMINUM CAP
L.S. 20676

NN - S 1/4 COR SEC 24
#6 REBAR W/
2" ALUMINUM CAP
L.S. 20676
IN MONUMENT BOX



STATE PLANE COORDINATE TIES
US STATE PLANE 1983
COLORADO NORTH 0501 NAD 83

POINT G N: 1386256.630 E: 3141241.596	POINT HH N: 1380994.476 E: 3141235.747
POINT M N: 1386319.658 E: 3151882.135	POINT NN N: 1381048.075 E: 3151869.681

BASED ON	
POINT I N: 1386281.538 E: 3143867.633	POINT L N: 1386342.625 E: 3149147.170
GRID SCALE FACTOR 0.9999599022	GRID SCALE FACTOR 0.9999599057
ELEVATION FACTOR 0.99977113	ELEVATION FACTOR 0.99977198
COMBINED FACTOR 0.99973104	COMBINED FACTOR 0.99973190
CONVERGENCE ANGLE 0'20'01"	CONVERGENCE ANGLE 0'20'46"

LEGEND:

- █ METRO DISTRICT 3
- █ METRO DISTRICT 4
- █ METRO DISTRICT 5
- █ METRO DISTRICT 6

DISTRICT ACREAGE:

- DISTRICT 3 = 0.11 ACRES
- DISTRICT 4 = 633.98 ACRES
- DISTRICT 5 = 19.61 ACRES
- DISTRICT 6 = 46.73 ACRES



THOMPSON CROSSING METRO DISTRICT

These drawings are instruments of service prepared by Merrick & Company, and are not to be used for any type of construction without the seal and signature of a Professional Engineer in the employ of Merrick & Company.

REV	#	DATE	DESCRIPTION	BY	CHECKED	DATE
	1	04/08/14	REVISION DESCRIPTION			

PROJECT # 8200	DATE APRIL 8, 2014	SCALE 1"=500'	DESIGNED BY J. Prelog	REVIEWED BY R. Van Uffelen
-------------------	-----------------------	------------------	--------------------------	-------------------------------

THOMPSON CROSSING METRO DISTRICT DISTRICT NO. 3-6 EXHIBIT JOHNSTOWN, COLORADO